

Caso Clínico

ANEURISMA GRANDE DE ACII

Historia clínica

- Edad:
- Sexo:
- Presentación clínica:

- Notas

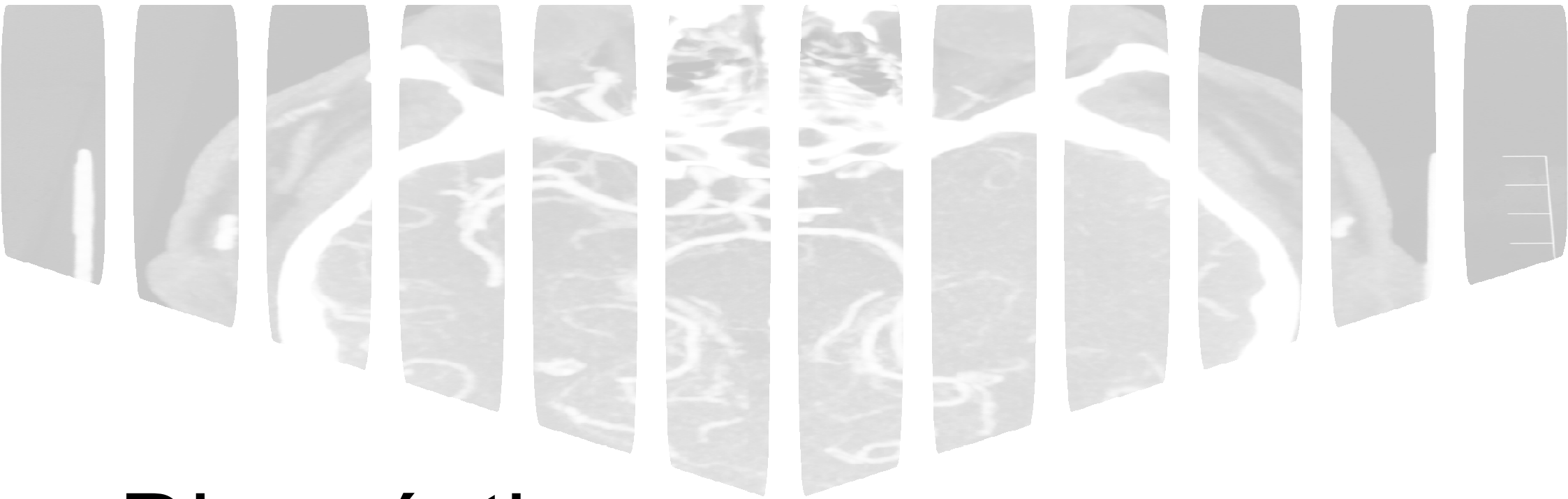


Procedimiento

Historia clínica

- Edad: 67
- Sexo: Mujer
- Presentación clínica:
 - Cefalea
 - Se realiza RM que muestra aneurisma de gran tamaño en la ACII
- Notas





Diagnóstico

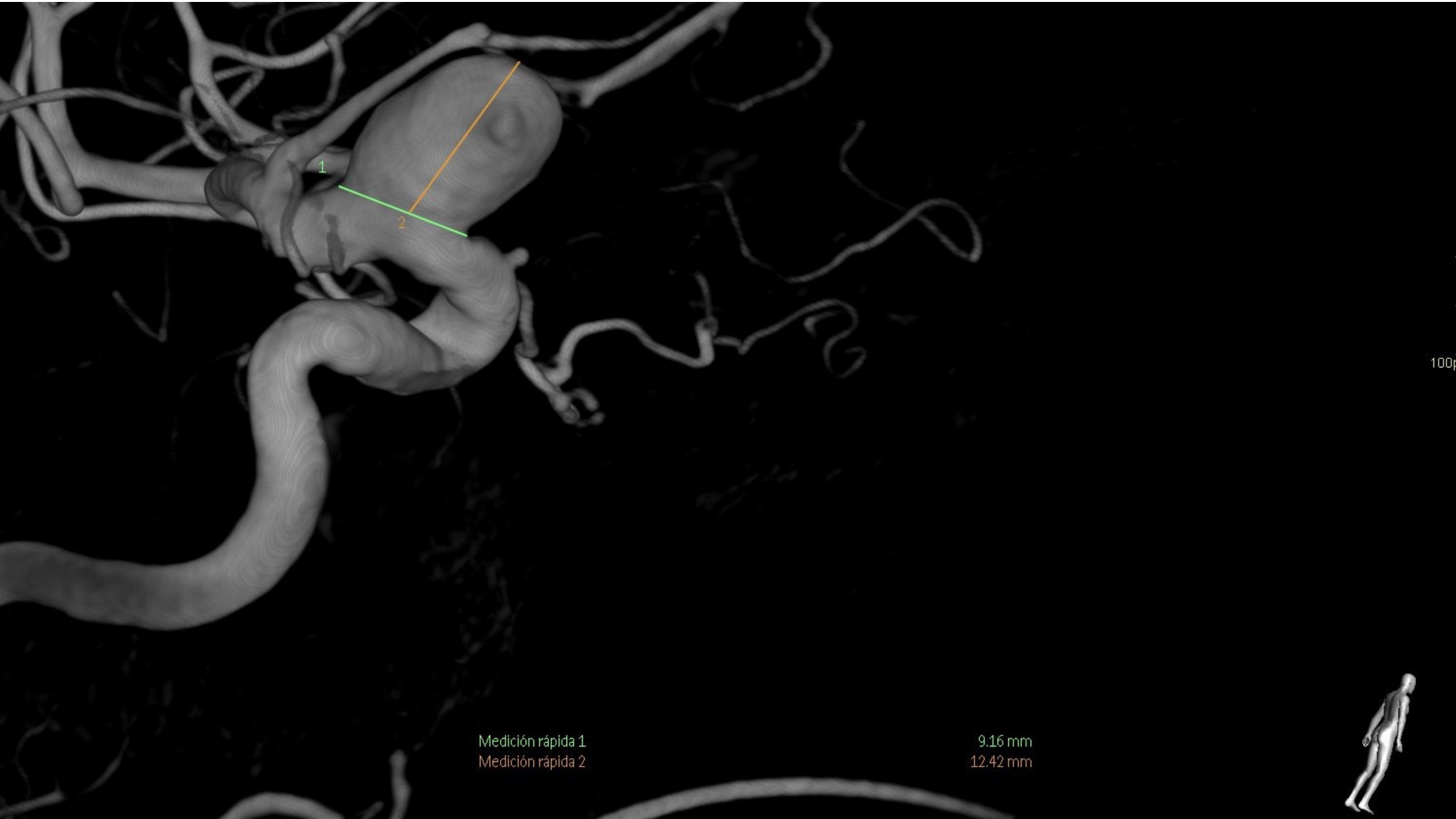


1

100px

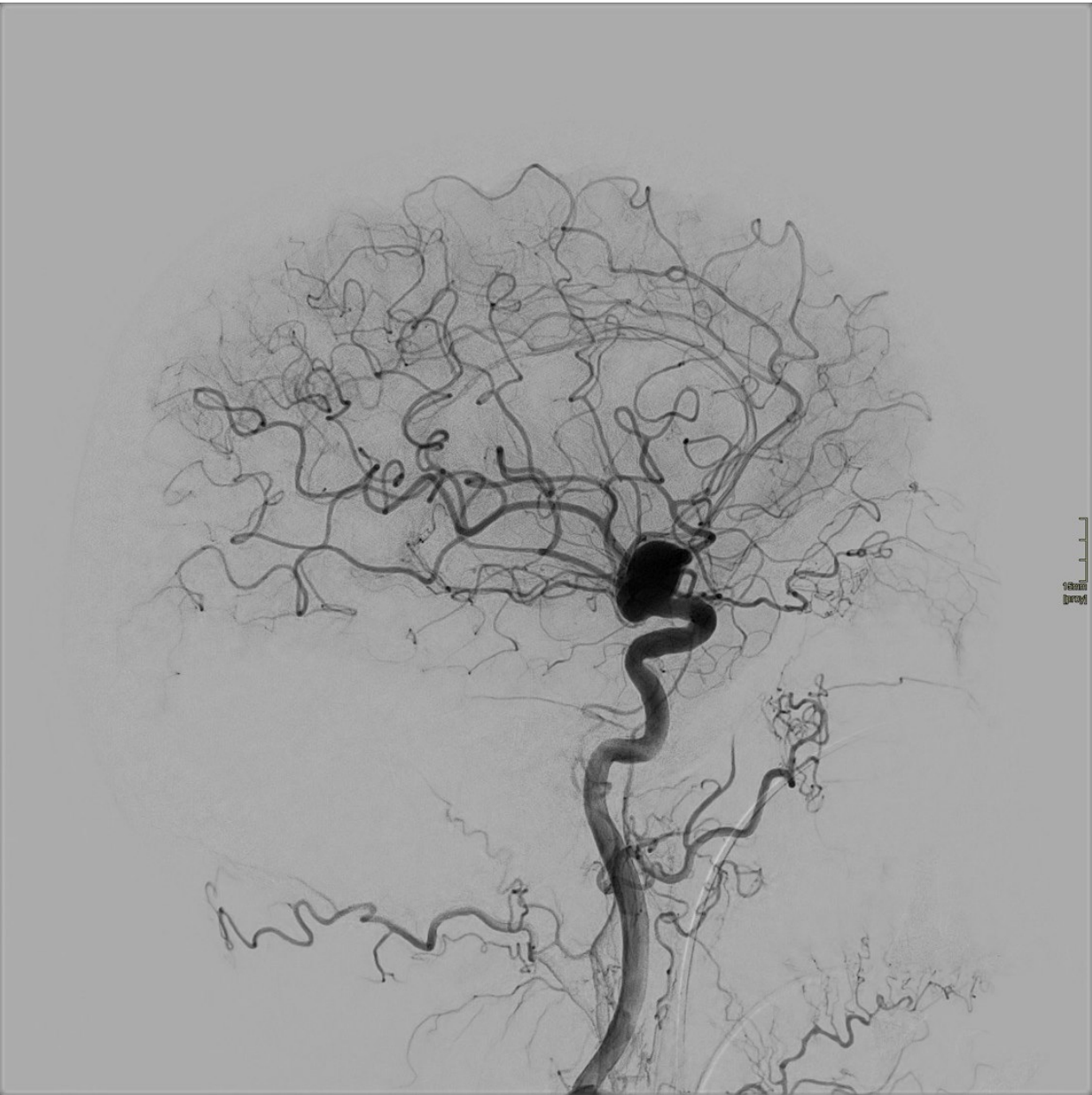
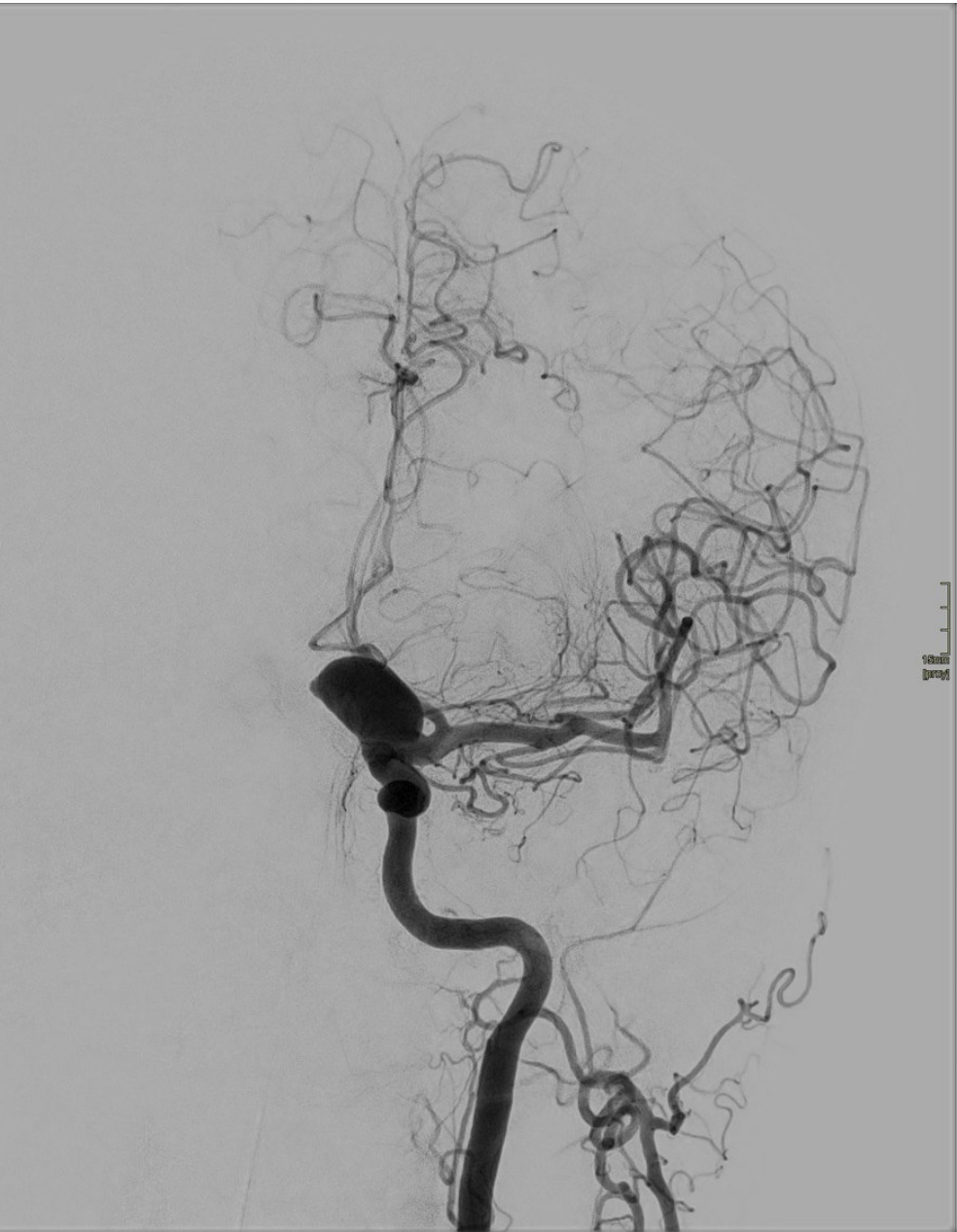
Medición rápida 1

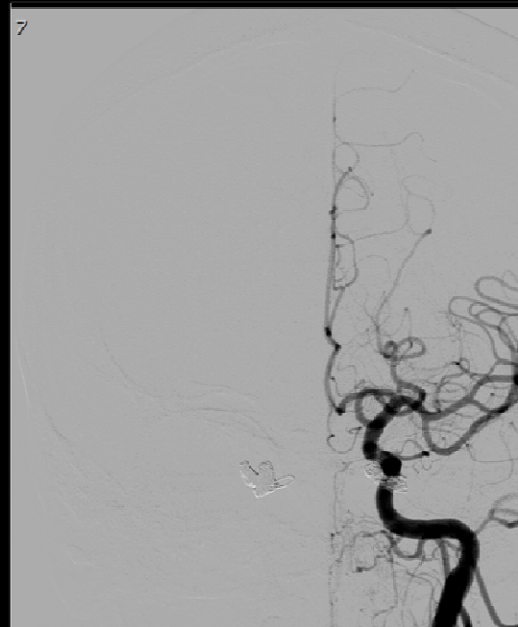
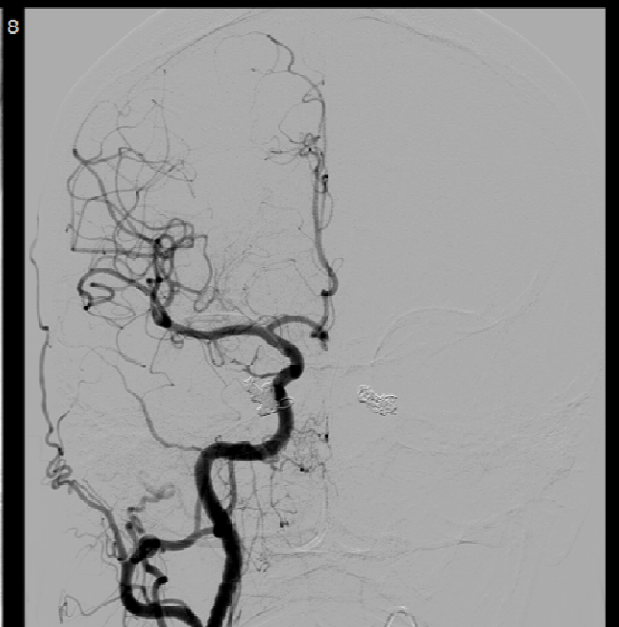
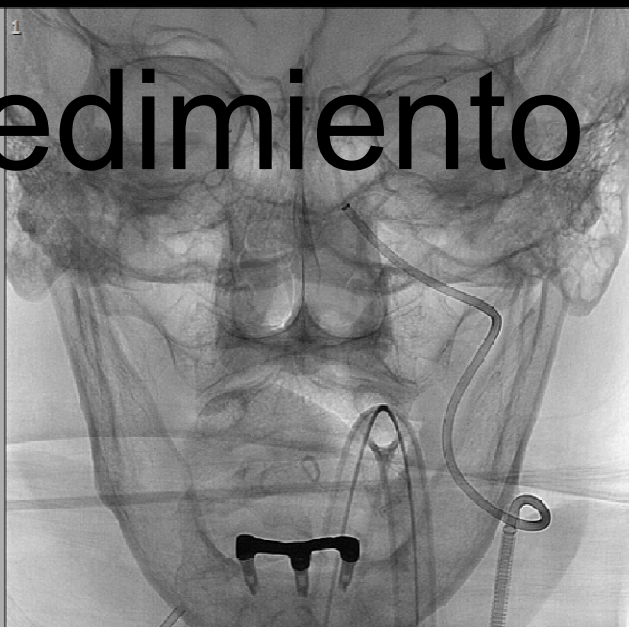
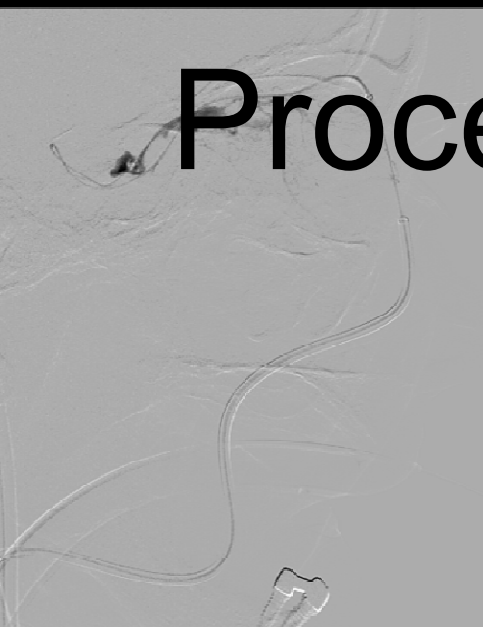
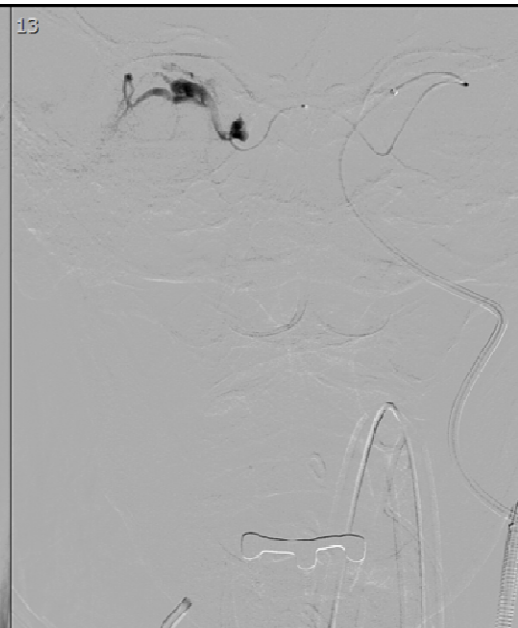
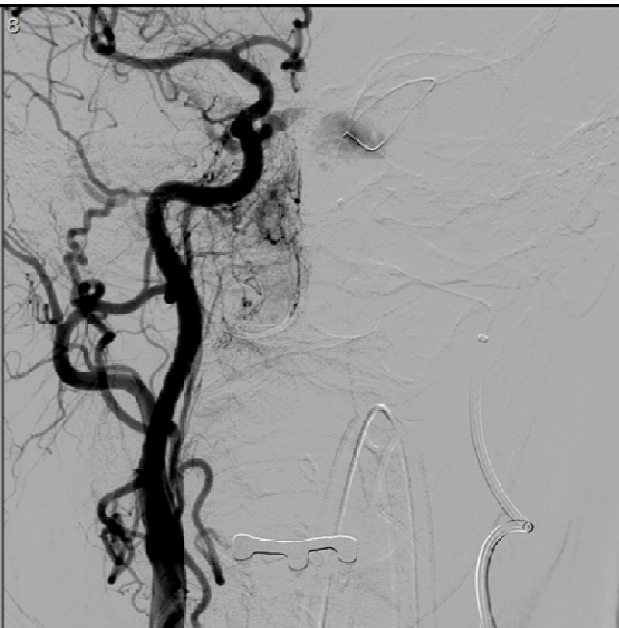
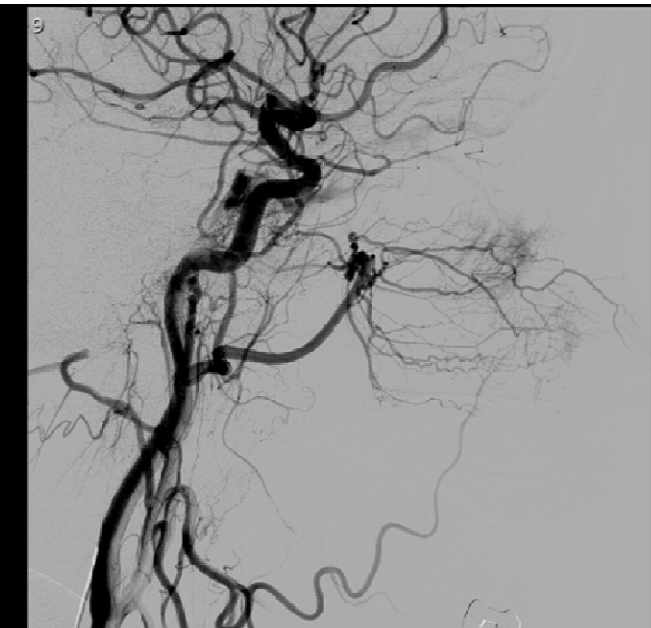
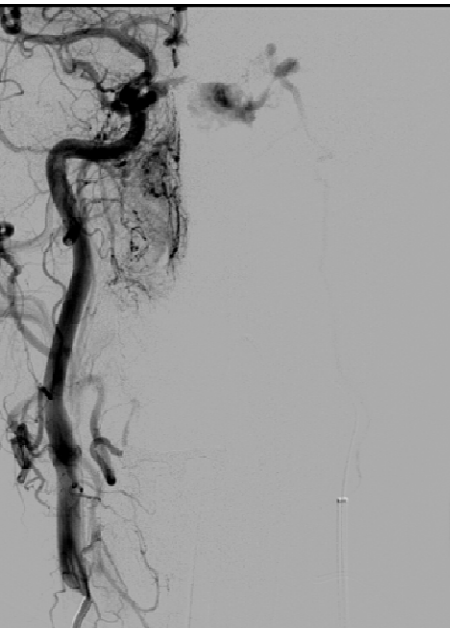
17.11 mm



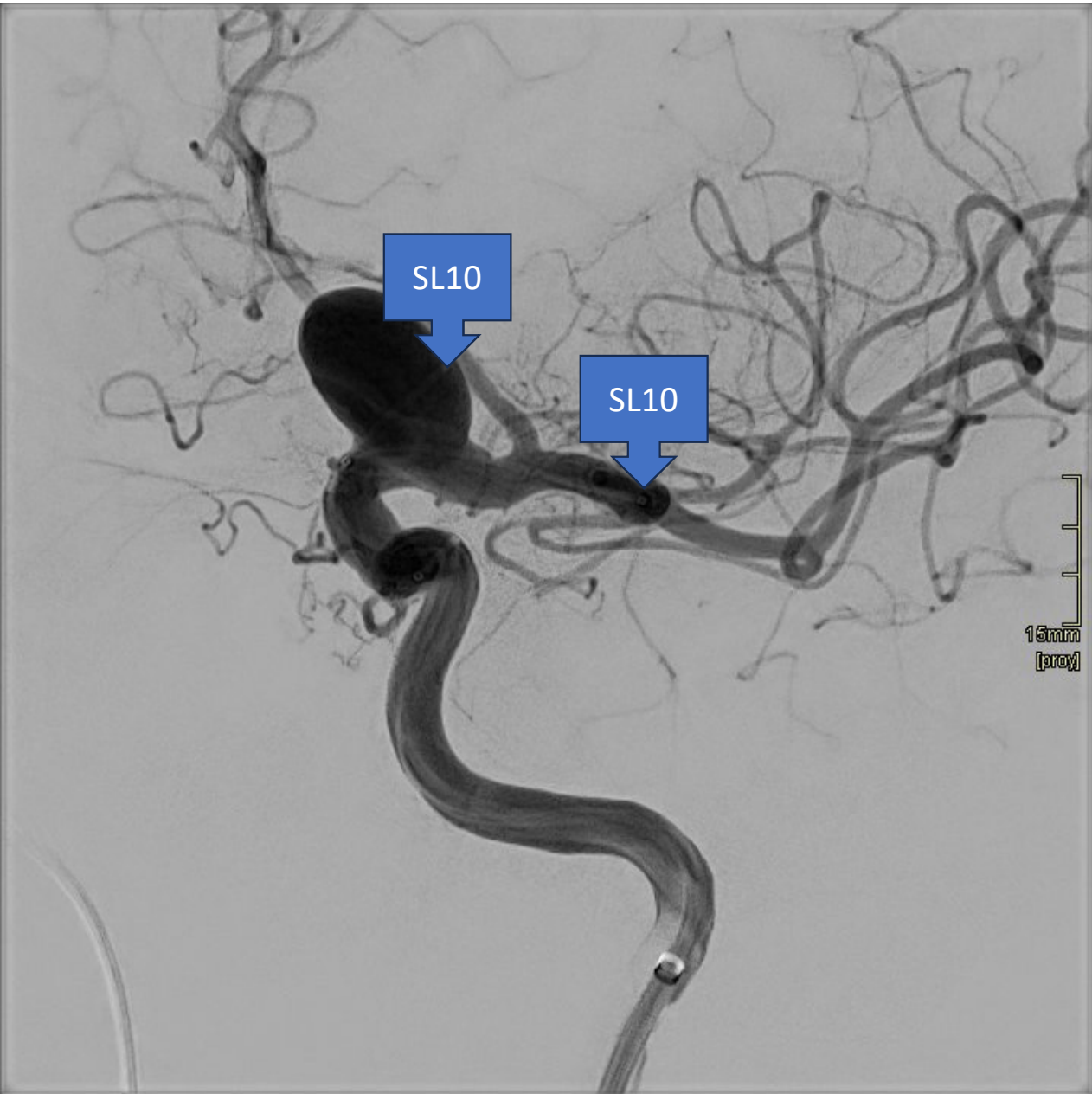
Medición rápida 1
Medición rápida 2

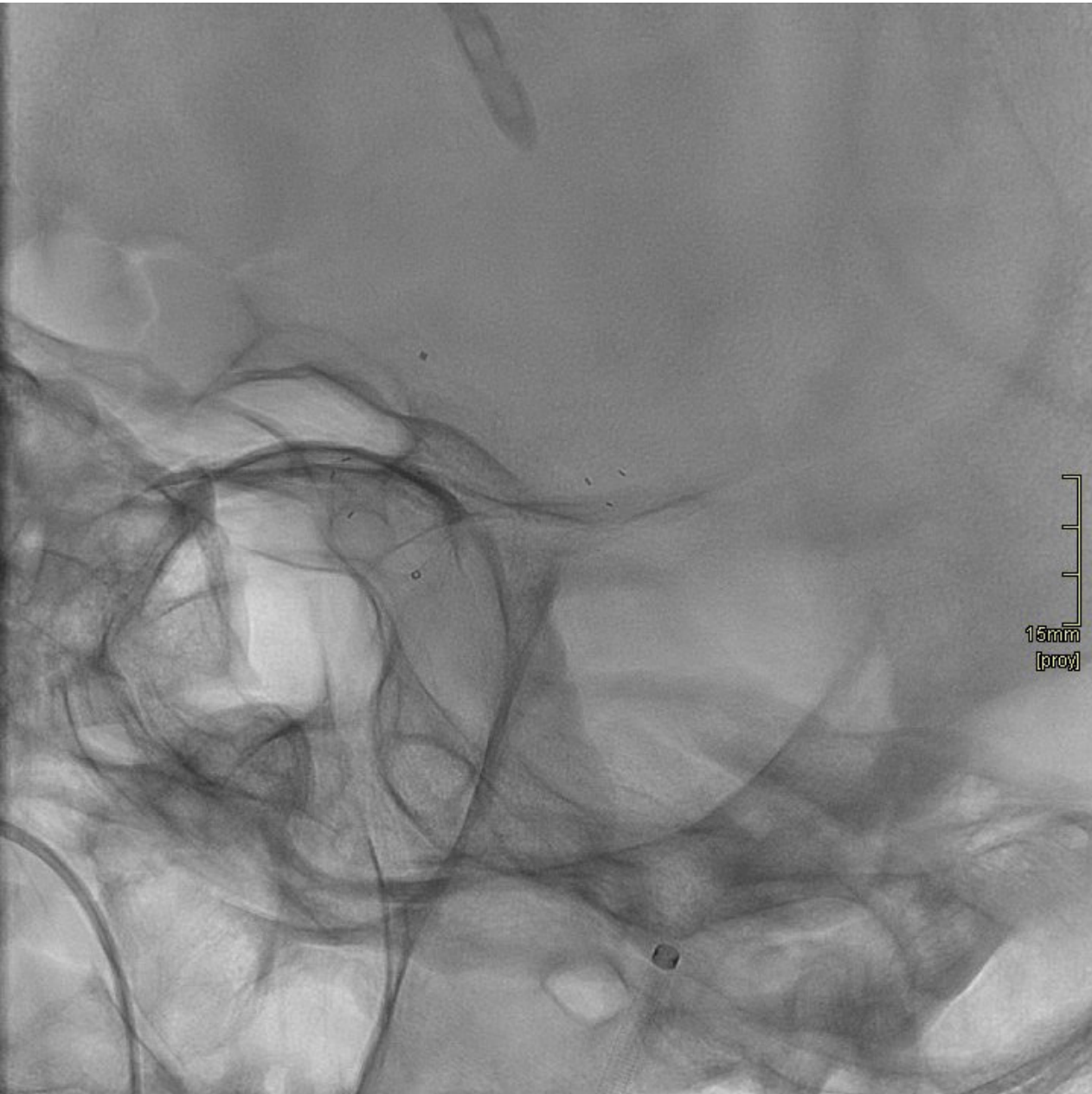
9.16 mm
12.42 mm





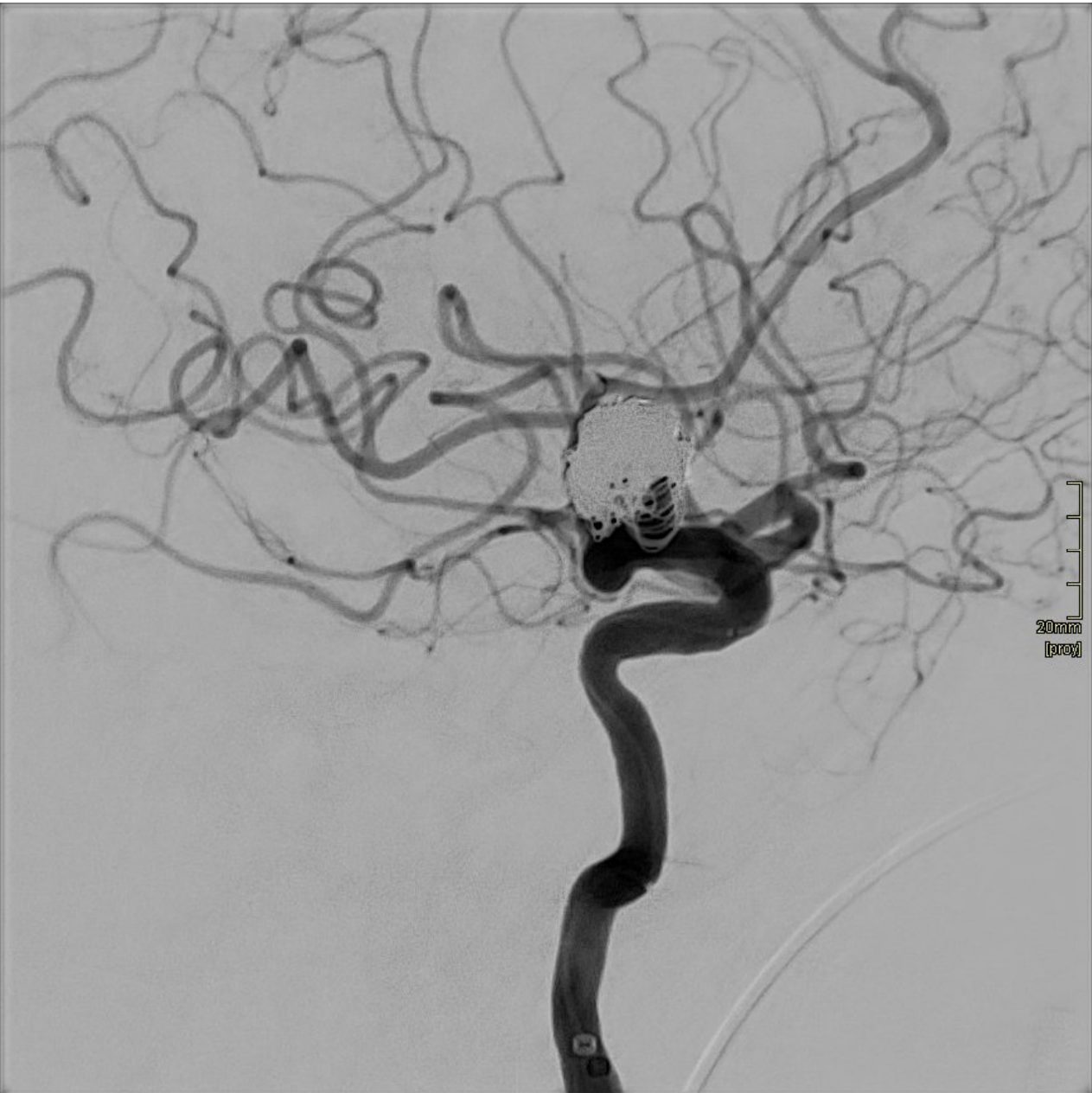
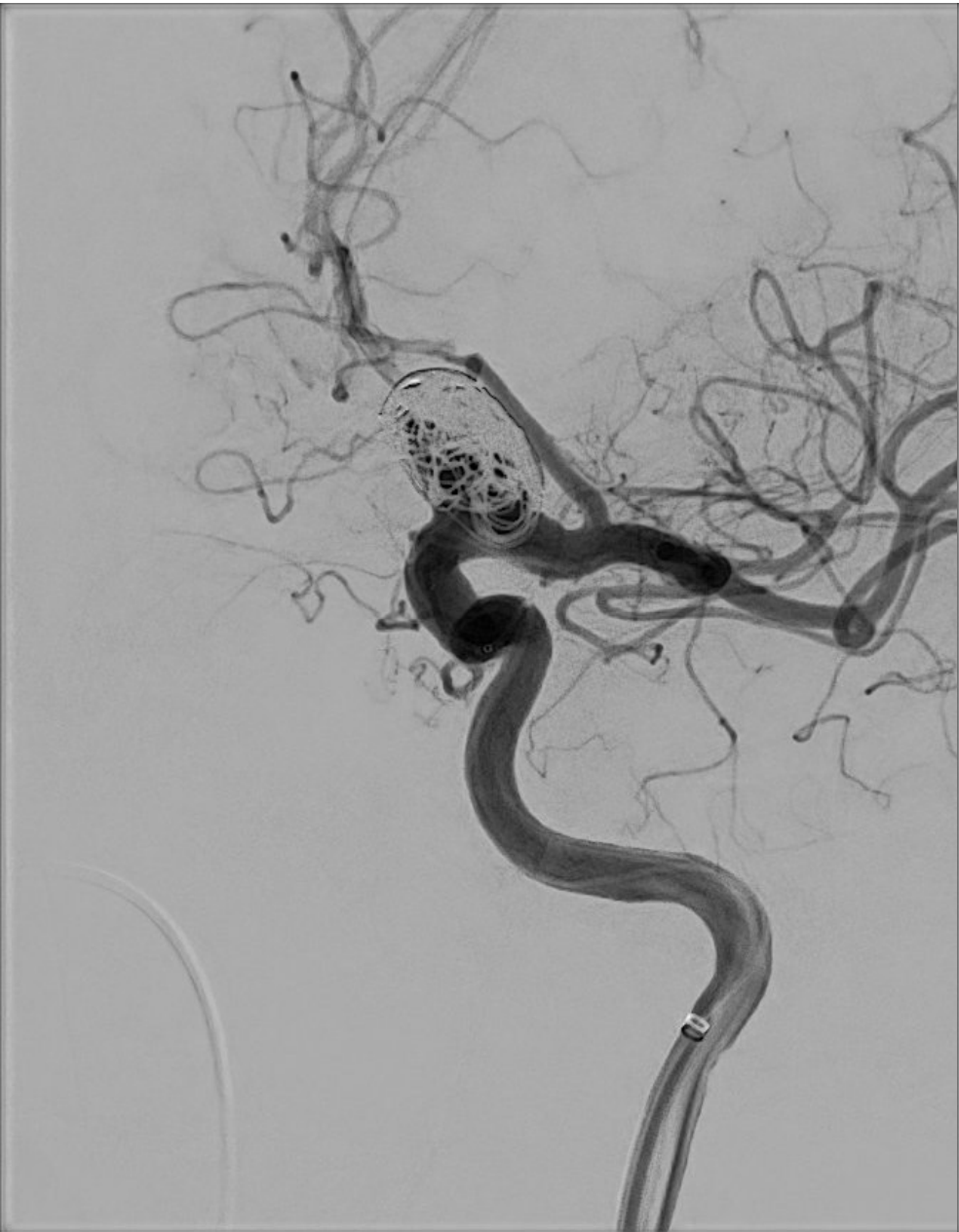
Procedimiento

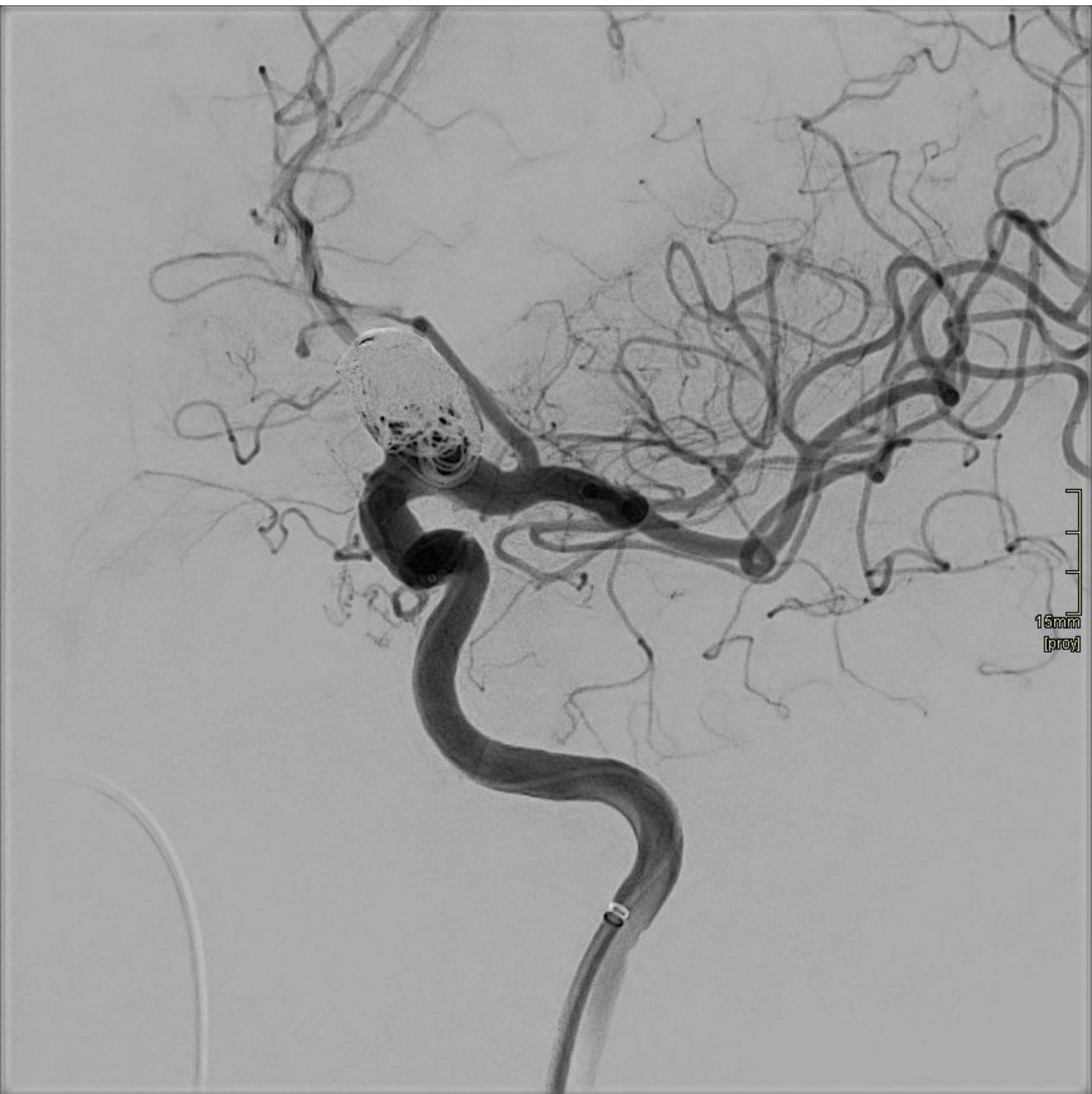














Resultado final



Resultado final

